

#tpc11

Timescapes Policy Conference 13 June 2011

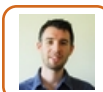
Twitter transcript
Timescapes Policy Conference
13 June 2011

Trending Words

&, #families, rt, -, #olderlives,
#research, #lifechances, policy,
care, family, over, research, 2,
@commutiny:, paul

Event Participants





If you're headin to London next week for #tpc11 let yourselves be known! Need 2 know who I should be following!! :-)

10-Jun-11 13:28 | salfordgareth



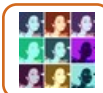
@drteresacairns Conference hashtag is #tpc11 - parallel sessions #lifechances #families #olderlives. Our official tweeter is @commutiny

12-Jun-11 11:03 | TimescapesStudy



.@salfordgareth Our list of tweeple for @TimescapesStudy #policyconference is here <http://ow.ly/5fMTh> We hope you enjoy #tpc11 w/ @commutiny

12-Jun-11 13:00 | TimescapesStudy



Join us on Twitter for @TimescapesStudy #family #policyconference this week <http://ow.ly/5dWM9> < Hashtag for the event is #tpc11

12-Jun-11 14:15 | commutiny



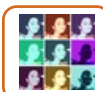
RT @commutiny: Join us on Twitter for @TimescapesStudy #family #policyconference this week <http://ow.ly/5dWM9> < Hashtag for the event is #tpc11

12-Jun-11 14:38 | paulstpancras



At Timescapes policy conference Mon/Tues, Families over time: research, policy, practice. Follow #tpc11, #lifechances, #families, #olderlives

12-Jun-11 18:06 | DrTeresaCairns



Thank you :) #tpc11 RT @teresasmisc: @commutiny looking forward to yr tweets tomoro; love idea of 'mutiny', network weaving & disruption ;-)

12-Jun-11 19:25 | commutiny



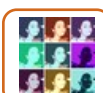
@TimescapesStudy thanks for putting the list 2gether! #tpc11

12-Jun-11 19:26 | salfordgareth



RT @DrTeresaCairns: At Timescapes policy conference Mon/Tues, Families over time: research, policy, practice. Follow #tpc11, #lifechances, #families, #olderlives

13-Jun-11 06:00 | RJDaddow



Interested by Prof Yvonne Kelly's findings on @BBCr4today? Follow #tpc11 for more from long-term research on #families <http://ow.ly/5gaQ9>

13-Jun-11 06:15 | commutiny



Check out our #policyconference Mon/Tues; Families over time: research, policy, practice. Follow #tpc11 #lifechances #families #olderlives

13-Jun-11 06:23 | TimescapesStudy



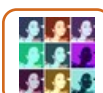
RT @TimescapesStudy: Check out our #policyconference Mon/Tues; Families over time: research, policy, practice. Follow #tpc11 #lifechances #families #olderlives

13-Jun-11 06:41 | salfordgareth



on my way 2 #tpc11 wonder if any research is narrative, like i been doin, or more longitudinal? either way i'm open 2 inspiration!

13-Jun-11 06:46 | salfordgareth



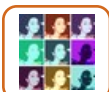
.@salfordgareth Promise you'll get maximum #brainfood and inspiration at #tpc11 - esp on #researchmethods #familypolicy interactions

13-Jun-11 07:18 | commutiny



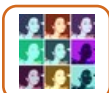
Our Director Prof Bren Neale on @BBCR1 in a few mins. Lots more today - Follow #tpc11 #families #lifechances #olderlives <http://ow.ly/5gbJ8>

13-Jun-11 07:35 | TimescapesStudy



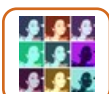
.@timescapesstudy brings intensive #qualitative #research and temporality together, explaining family interactions over time #tpc11

13-Jun-11 09:09 | commutiny



Changing policy models of family life, male breadwinner - adult worker - co-family, do not keep up with lived experiences #tpc11 #families

13-Jun-11 09:12 | commutiny



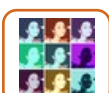
Family policy is about "what ought" to be, lived experience is about "what is" - #research can help explain this difference #tpc11

13-Jun-11 09:13 | commutiny



The changing landscapes of family lives & public policies: Fiona Williams, Prof of Social Policy @UniversityLeeds <http://ow.ly/5fMLT> #tpc11

13-Jun-11 09:15 | TimescapesStudy



Combining interpretations of care from 'above' and 'below' is an issue for #socialjustice and for #socialinvestment #tpc11

13-Jun-11 09:15 | commutiny



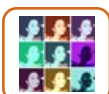
RT @commutiny: Family policy is about "what ought" to be, lived experience is about "what is" - #research can help explain this difference #tpc11

13-Jun-11 09:16 | marthaltc



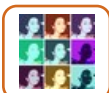
RT @commutiny: Changing policy models of family life, male breadwinner - adult worker - co-family, do not keep up with lived experiences #tpc11 #families

13-Jun-11 09:17 | marthaltc



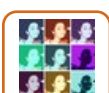
Social Justice groups make claims for #recognition; visibility, voice and valuing care and carers #tpc11 #families #lifechances #olderlives

13-Jun-11 09:21 | commutiny



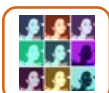
There has been a redistribution of care from #families to states, from mothers to fathers and from providers to users #tpc11

13-Jun-11 09:23 | commutiny



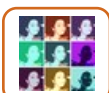
RT @TimescapesStudy: The changing landscapes of family lives & public policies: Fiona Williams, Prof of Social Policy @UniversityLeeds <http://ow.ly/5fMLT> #tpc11

13-Jun-11 09:23 | commutiny



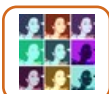
#tpc11 "@ripfa: What works in relation to carers breaks? <http://bit.ly/IZS4Rb> Overview of #evidence from last year #carers #respite

13-Jun-11 09:25 | commutiny



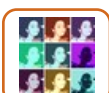
Equalities approaches to social inclusion overshadowed by employability & obligation to work. Non-workers turned into objects of care #tpc11

13-Jun-11 09:31 | commutiny



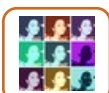
Choice not Voice: Shift from providing services to giving cash benefits; users of #care services turned into consumers. #tpc11 #carers

13-Jun-11 09:33 | commutiny



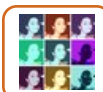
Valuing care is subordinate to "right to work", Limited progress made on recognition, redistribution and flexibility of care #tpc11

13-Jun-11 09:37 | commutiny



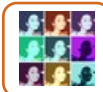
Great stuff from Caroline Glendinning > #Care Provision within #Families & SocioEconomic Impact on Care Providers #tpc11 <http://ow.ly/5gfmS>

13-Jun-11 09:45 | commutiny



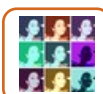
Providing #data infrastructure is a crucial role for @ESRC. UK household longitudinal study is largest worldwide <http://ow.ly/5gfUu> #tpc11

13-Jun-11 10:05 | commutiny



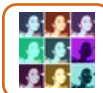
Longitudinal studies allow analysis and understanding that cross-sectional data and research can not - they have distinctive value #tpc11

13-Jun-11 10:09 | commutiny



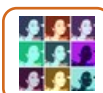
Millennium Cohort Study <http://ow.ly/5ggbp> < Paul Boyle explains how qualitative material is used even in these quant-heavy projects #tpc11

13-Jun-11 10:17 | commutiny



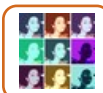
British Household Panel Survey hosted by @ISERessex has had wide and significant influence on policy <http://ow.ly/5gggf> #tpc11

13-Jun-11 10:19 | commutiny



Paul Boyle credits @TimescapesStudy stakeholder model of archiving w/ helping 'productive alignment' of primary & secondary #research #tpc11

13-Jun-11 10:21 | commutiny



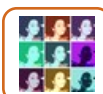
Fewer people are willing to engage with our large scale surveys, response rates declining esp niche groups important to policymakers #tpc11

13-Jun-11 10:23 | commutiny



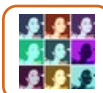
RT @commutiny: Fewer people are willing to engage with our large scale surveys, response rates declining esp niche groups important to policymakers #tpc11

13-Jun-11 10:25 | jennacondie



Paul Boyle's @NCRMUK lecture last month - Making better use of administrative #data in #research [video] <http://ow.ly/5fN6C> #tpc11

13-Jun-11 10:30 | commutiny



Fascinating presentation by Paul Boyle about the Scottish #longitudinal study and complementary #research <http://ow.ly/5ggCi> #tpc11

13-Jun-11 10:35 | commutiny



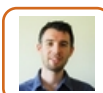
RT @commutiny: Fascinating presentation by Paul Boyle about the Scottish #longitudinal study and complementary #research <http://ow.ly/5ggCi> #tpc11

13-Jun-11 10:39 | dkamerade



Broken heart fr/ bereavement 'shortens life expectancy', researchers find <http://ow.ly/5ggJg> < Media coverage of Paul Boyle's example #tpc11

13-Jun-11 10:39 | commutiny



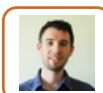
escr priorities not influenced by govt accordin 2 chief exec #tpc11

13-Jun-11 10:47 | salfordgareth



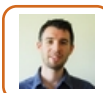
RT @salfordgareth: escr priorities not influenced by govt accordin 2 chief exec #tpc11

13-Jun-11 10:49 | TimescapesStudy



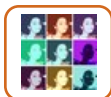
ONS considerin finishin w the census. apparently finland do it much cheaper with admin data #tpc11

13-Jun-11 10:53 | salfordgareth



r u happy 2 b a research participant w/out yr knowledge or consent? #tpc11

13-Jun-11 10:55 | salfordgareth



RT @ilcuk: #Research shows disproportionate effect of cuts on older service users <http://t.co/OAPZTfa> #tpc11 #olderlives

13-Jun-11 11:13 | commutiny



Parallel sessions this afternoon at #tpc11 <http://ow.ly/5fNfz> Which should @commutiny report from? #lifechances #families #olderlives

13-Jun-11 11:15 | TimescapesStudy



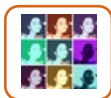
change in policy discourse from womens 'right 2 work' to 'obligation 2 earn' - prof fiona williams #tpc11

13-Jun-11 11:16 | salfordgareth



RT @commutiny: RT @ilcuk: #Research shows disproportionate effect of cuts on older service users <http://t.co/OAPZTfa> #tpc11 #olderlives

13-Jun-11 11:17 | paulstpancras



Great connections today at #tpc11 @DrTeresaCairns recommends the work of @PCStudies - Centre for #Parenting Culture Studies at Uni of Kent

13-Jun-11 11:20 | commutiny



Our afternoon #olderlives sessions will be chaired by @TimescapesStudy Director Professor Bren Neale <http://ow.ly/5fNw2> #tpc11

13-Jun-11 11:20 | TimescapesStudy



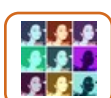
Our afternoon #lifechances sessions will be chaired by Professor Alan Deacon <http://ow.ly/5fNil> #tpc11

13-Jun-11 11:20 | TimescapesStudy



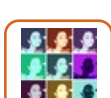
Our afternoon #families sessions will be chaired by Katherine Rake CEO of Family & Parenting Institute @FPIonline <http://ow.ly/5fNq4v> #tpc11

13-Jun-11 11:25 | TimescapesStudy



RT @growinupinscot: Research shows stark inequalities for pre-school kids <http://ow.ly/5gf5r> HT @iseressex #tpc11

13-Jun-11 11:45 | commutiny



Chief Exec of @FIPonline Katherine Rake's recent comment on the commercialisation & sexualisation of childhood <http://bbc.in/k8DXrz> #tpc11

13-Jun-11 11:55 | commutiny



#Families sessions start with team from Cardiff University "Men as #Fathers Project" <http://ow.ly/5fNEF> #tpc11

13-Jun-11 12:00 | TimescapesStudy



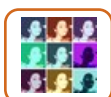
Joanna Bornat & Bill Bytheway of The Oldest Generation project begin #olderlives sessions w/ focus on grandparents <http://ow.ly/5fNMj> #tpc11

13-Jun-11 12:05 | TimescapesStudy



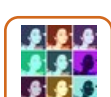
First #lifechances session from Ros Edwards & Susie Weller from #Families & #SocialCapital #Research Group @LSBU <http://ow.ly/5fNAX> #tpc11

13-Jun-11 12:05 | TimescapesStudy



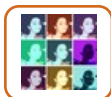
Strengthening Men's Involvement in Fathering - social & cultural shifts have led to changing expectations of #families #tpc11

13-Jun-11 12:06 | commutiny



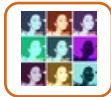
Late life reflections on the downturn: perspectives from The Oldest. Generation. Bornat & Bytheway <http://ow.ly/5fNJy> #tpc11 #olderlives

13-Jun-11 12:10 | commutiny



The temporal approach is valuable for understanding #fatherhood within the context of other life events and experiences #families #tpc11

13-Jun-11 12:22 | commutiny



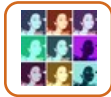
Old settlement around #fatherhood has changed, but we don't know where it's heading - despite #newdad advertising images #families #tpc11

13-Jun-11 12:25 | commutiny



Second #families session "Expectations and Realities: Rethinking 'choice' for first time mothers" Lucy Hadfield & Rachel Thomson #tpc11

13-Jun-11 12:30 | TimescapesStudy



Followers of #tpc11 may also enjoy #lseimpactconf today (and the other way round!)

13-Jun-11 12:33 | commutiny



RT @commutiny: Followers of #tpc11 may also enjoy #lseimpactconf today (and the other way round!)

13-Jun-11 12:33 | LSEImpactBlog



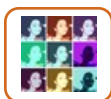
Configuring Families over Time: How policy processes shape low income #grandparenting. Kahryn Hughes & Nick Emmel #tpc11 #olderlives

13-Jun-11 12:35 | TimescapesStudy



Second #lifechances session is "Growing up in Northern Ireland" Sheena McGrellis & Janet Holland of @LSBU #tpc11

13-Jun-11 12:35 | TimescapesStudy



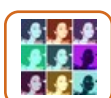
Considering solidarities & divisions brought about by #motherhood; 'female biography' differs between & within generations #families #tpc11

13-Jun-11 12:36 | commutiny



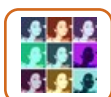
RT @commutiny: Considering solidarities & divisions brought about by #motherhood; 'female biography' differs between & within generations #families #tpc11

13-Jun-11 12:36 | EmmaLangman



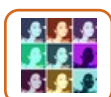
Timing of #motherhood - 'too early' or 'too late' is a big issue for society and social policy. #families #qualitative #research #tpc11

13-Jun-11 12:38 | commutiny



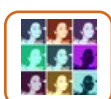
#Motherhood is a site of solidarity or division, often class & ethnicity are factors which influence mixing or distancing of families #tpc11

13-Jun-11 12:39 | commutiny



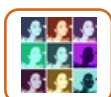
#tpc11 is @TimescapesStudy conference: Understanding & Supporting #Families over Time: #Research, Policy and Practice <http://ow.ly/5gkLf>

13-Jun-11 12:43 | commutiny



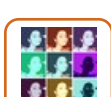
Book chapter > The making of modern #motherhood: Storying an emergent identity [pdf] <http://ow.ly/5fOfU> #families #tpc11 #research

13-Jun-11 12:45 | commutiny



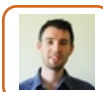
RT @TimescapesStudy: Our #data archive is designed to facilitate the sharing and reuse of #qualitative #longitudinal #research data <http://ow.ly/5gfLA> #tpc11

13-Jun-11 12:45 | commutiny



#Lifecourse briefing paper: #intergenerational exchange : #grandparents and #social exclusion <http://ow.ly/5fOMr> #tpc11 #olderlives

13-Jun-11 12:50 | commutiny



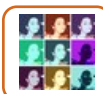
RT @commutiny: Being a Parent: Fathers' voices in times of #change. Project info [pdf] <http://ow.ly/5gjNx> #tpc11 #families #fatherhood

13-Jun-11 13:22 | salfordgareth



RT @commutiny: 'Men as Fathers' blog <http://ow.ly/5fNR0> #tpc11 #families #lifechances #policyconference

13-Jun-11 13:23 | salfordgareth



Fantastic reports via @CARDItweets Centre for #Ageing #Research and Development in Ireland <http://ow.ly/5fQ86> #olderlives #tpc11

13-Jun-11 13:30 | commutiny



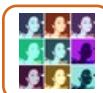
Professor Kathleen Kiernan speaking on child #wellbeing in the early years Kathleen Kiernan <http://ow.ly/5fP1S> #tpc11 #lifechances

13-Jun-11 13:30 | TimescapesStudy



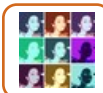
#Gender, Values and Commitments: Continuity and change in parenting. Sarah Irwin and Mandy Winterton #families session at #tpc11

13-Jun-11 13:35 | TimescapesStudy



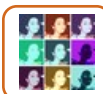
Fragile #Families in the US and UK - Kathleen Kiernan - University of York [pdf] <http://ow.ly/5fPkK> #lifechance #research #tpc11

13-Jun-11 13:35 | commutiny



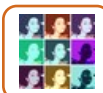
Cameron: parental responsibility is 'task for a generation' <http://t.co/3JrpOQ2> < Context for working #parenthood session #tpc11 #families

13-Jun-11 13:36 | commutiny



RT @salfordgareth: "independence not necessarily dominant model of adulthood - its bout recognisin responsibilities 2 yr family 2" #tpc11

13-Jun-11 13:36 | commutiny



#Teaching and reusing #qualitative data <http://ow.ly/5fPTH> #tpc11 < With Sarah Irwin and Mandy Winterton from @TimescapesStudy

13-Jun-11 13:40 | commutiny



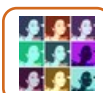
Older people's views and experiences of resources in later life Katherine Hill CRSP <http://ow.ly/5fQgv> #olderlives #tpc11

13-Jun-11 13:55 | TimescapesStudy



#Families' experiences of working #parenthood: construction & negotiation of responsibility... Dr Jeni Harden <http://ow.ly/5fPCr> #tpc11

13-Jun-11 14:01 | TimescapesStudy



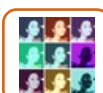
More from Jeni Harden et al on changing experiences of young #families & how they reconcile work/life over time <http://ow.ly/5fPFY> #tpc11

13-Jun-11 14:05 | commutiny



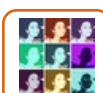
Growing up in low income, working lone parent families, Tess Ridge (@UniofBath) < Last #lifechances session at #tpc11 today

13-Jun-11 14:05 | TimescapesStudy



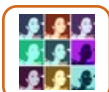
#Poverty 111: Listening to #children: their contribution to anti-poverty policies, by Tess Ridge <http://ow.ly/5fPAx> #lifechances #tpc11

13-Jun-11 14:10 | commutiny



Older people's views & experiences of resources... <http://ow.ly/5fQgO> < Compare 2007 findings with 2011 thx to @JRF_UK #tpc11 #olderlives

13-Jun-11 14:15 | commutiny



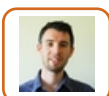
Research & policy on families is only gendered 'in the middle' - we hear abt mothers/fathers but general terms children/grandparents #tpc11

13-Jun-11 14:44 | commutiny



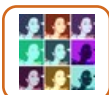
RT @salfordgareth: "positive parenting can transcend poverty" #tpc11

13-Jun-11 14:45 | TimescapesStudy



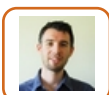
research shows agency exercised by children tryin 2 meet their needs -though policy constructs them as passive #tpc11

13-Jun-11 14:47 | salfordgareth



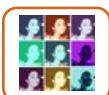
Dorit Braun: "The poor law is alive and well and kicking. We still have the 'deserving' and 'undeserving' poor" #tpc11

13-Jun-11 14:51 | commutiny



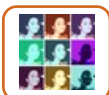
family research shows that "sh*t happens" #tpc11 - plenary. ie. not as policy would like life 2 work

13-Jun-11 14:52 | salfordgareth



RT @salfordgareth: family research shows that "sh*t happens" #tpc11 - plenary. ie. not as policy would like life 2 work

13-Jun-11 14:54 | commutiny



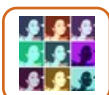
Dorit Braun: Difficulty for policymakers and practitioners, tension around being "an agent of change or an agent of the State" #tpc11

13-Jun-11 14:55 | commutiny



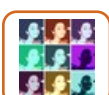
RT @TimescapesStudy: #Families' experiences of working #parenthood: construction & negotiation of responsibility... Dr Jeni Harden <http://ow.ly/5fPCr> #tpc11

13-Jun-11 14:57 | CRFRtweets



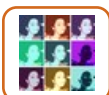
#Research helps policymakers and practioners to work with people on sensemaking - everyone knows there is no magic bullet, get real! #tpc11

13-Jun-11 14:57 | commutiny



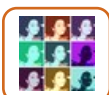
Thirtysomething #grandparents need social services to adapt, says study <http://t.co/AfTEoRe> via @guardian #tpc11 #olderlives in the news

13-Jun-11 15:02 | commutiny



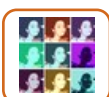
Great question, will ask! #tpc11 RT @crfrtweets: @TimescapesStudy what is the main strategy for maximising the impact of research on ageing?

13-Jun-11 15:04 | commutiny



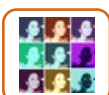
Obligations and mutuality of care in the family can be problematic and difficult to negotiate, esp in marginalised groups #tpc11 #carers

13-Jun-11 15:06 | commutiny



Personalisation agenda is a shifting of risk to individuals rather than a real way of achieving 'voice' for recipients of care #tpc11

13-Jun-11 15:20 | commutiny



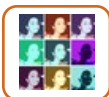
You can be left to your own resources and then have to face hard questions about the safety and quality of your care #personalisation #tpc11

13-Jun-11 15:21 | commutiny



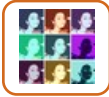
RT @TimescapesStudy: Paul Boyle CE @ESRC now speaking on #impact & contribution of #qualitative & #quantitative #longitudinal #research <http://ow.ly/5fNbW> #tpc11

13-Jun-11 15:29 | ESRC



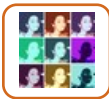
Understanding Society - study of socio-economic circumstances & attitudes of people in 40,000 British households. <http://ow.ly/5gfXx> #tpc11

13-Jun-11 17:20 | commutiny



@SamRSparrow Yes, think so. Plus there's a Kate Evans at #tpc11 - I've not caught up with her yet.

13-Jun-11 17:29 | commutiny



MT @iseressex: Yvonne Kelly on Today programme @BBCr4today talking about #inequalities in pre-school kids bbc.in/jXR7pB #tpc11 #poorkids

13-Jun-11 17:45 | commutiny



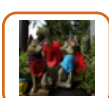
Now home from 1st day #tpc11; fortified w/ tea, will attempt summary of key points as I heard them

13-Jun-11 18:45 | TeresasMisc



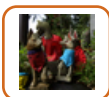
Fiona Williams: intensive qualitative research + temporality = change over time #tpc11

13-Jun-11 18:49 | DrTeresaCairns



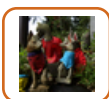
is this 'deep' research like Geertz' 'thick description'? My reflection on qualitative research over time #tpc11

13-Jun-11 18:51 | DrTeresaCairns



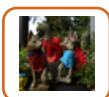
Fiona Williams- changing model of family from male breadwinner to adult worker model or the 'co-resourcing family' #tpc11

13-Jun-11 18:51 | DrTeresaCairns



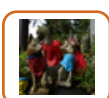
idea of lived experience as 'what is' contrasted with policy frameworks as the 'what ought' #tpc11

13-Jun-11 18:53 | DrTeresaCairns



Fiona Williams: care has emerged as central social/political/economic concern across Europe #tpc11

13-Jun-11 18:54 | DrTeresaCairns



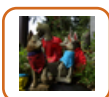
competing interpretations of care 'from below' & 'from above'. #tpc11

13-Jun-11 18:55 | DrTeresaCairns



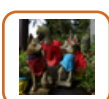
RT @commutiny Paul Boyle encourages all researchers to consider impact right from the start - @ESRC Impact Toolkit <http://ow.ly/5gfCm> #tpc11

13-Jun-11 18:56 | karlwilding



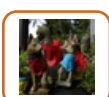
Fiona Williams: interesting pt @ redistribution of care thru time & space : over the lifecourse, through time.... #tpc11

13-Jun-11 18:57 | DrTeresaCairns



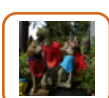
...but also transnational redistribution of care labour: poorer regions bear the main costs t/f CARE is also a global issue #tpc11

13-Jun-11 18:58 | DrTeresaCairns



tensions in EU policy frameworks: policies gender equality of 1990s slipped from agenda towards dominant framework of employability #tpc11

13-Jun-11 19:00 | DrTeresaCairns



model of work-centred welfare state t/f work as the centre of how policies funded #tpc11

13-Jun-11 19:01 | DrTeresaCairns



Voice is confused w/ choice -need voice as citizens not just consumers #tpc11 #lifechances

13-Jun-11 19:11 | DrTeresaCairns



Fiona Williams: the ethic of care is subordinated to the ethic of work #lifechances #tpc11

13-Jun-11 19:11 | DrTeresaCairns



Fiona Williams used 'care capital':international care work recruitment-interesting concept, applied to analysis of 'markets' in care #tpc11

13-Jun-11 19:13 | DrTeresaCairns



Fiona Williams: important to argue for social value of care; investment in quality care can itself generate economic value #tpc11

13-Jun-11 19:15 | DrTeresaCairns



Discussion: time periods as frameworks of analysis shows how/if the discourse changes; eg from 'gender equality' to 'access to work'. #tpc11

13-Jun-11 19:16 | DrTeresaCairns



Paul Boyle/ESRC: In Scotland can link 1991 census data back to 1939 census, so link present lives back in time across 5 generations #tpc11

13-Jun-11 19:20 | DrTeresaCairns



Paul Boyle/Scottish study on Widowhood & Life Expectancy- 'real link' between death of partner & life expectancy of surviving partner #tpc11

13-Jun-11 19:24 | DrTeresaCairns



wld like to look at widowhood & life expectancy data & compare w/ qualitative data from eg #MO to see what patterns emerge #tpc11

13-Jun-11 19:26 | DrTeresaCairns



?s raised @ changing policy discourses & how researchers can/shld frame their work to respond to these changes #tpc11

13-Jun-11 19:29 | DrTeresaCairns



issue of research over time-outcomes cannot be determined #tpc11

13-Jun-11 19:30 | DrTeresaCairns



Bren Neale: we cannot understand what works for ppl unless we understand what matters to them #tpc11 #lifechances #families #olderlives

13-Jun-11 19:31 | DrTeresaCairns



care ethic/productive work ethic challenged:older ppl are v. productive but we need to challenge notions of 'production' #olderlives #tpc11

13-Jun-11 19:33 | DrTeresaCairns



focus of qualitative research: peoples own practical ethics in the way they conduct their own lives #tpc11

13-Jun-11 19:34 | DrTeresaCairns



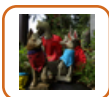
Grandparenting across Lifecourse: 4 generational families-beanpole families=longer (time) rather than wider(numbers) #olderlives #tpc11

13-Jun-11 19:38 | DrTeresaCairns



Bornat/Bytheway: life histories w/ elders over 75-reflections on their grndparents, #tpc11 #olderlives

13-Jun-11 19:42 | DrTeresaCairns



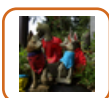
Exhausted now reviewing the day: will attempt a last few summary tweets #tpc11

13-Jun-11 19:55 | DrTeresaCairns



Rapporteur-Dorit Braun: ppl's lives are complicated although policy makers wld like them to be simple #tpc11 #lifechances

13-Jun-11 19:56 | DrTeresaCairns



Dorit Braun: lives are also gendered-not just @ g/parents, but we're not distinguishing between g/fathers/mothers or sons/daughters #tpc11

13-Jun-11 19:58 | DrTeresaCairns



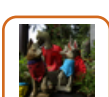
Dorit Braun: useful idea , the narrative ethics of care #tpc11

13-Jun-11 19:59 | DrTeresaCairns



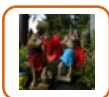
Dorit Braun: policy discourse of dependence/independence yet reality is of interdependence & mutuality #tpc11

13-Jun-11 20:01 | DrTeresaCairns



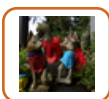
Looking forward to 2nd daySupporting Families over Time; interested in what Frank Field will say @ policy issues & poor children #tpc11

13-Jun-11 20:17 | DrTeresaCairns



Oops! forgot what I felt was key point of Dorit Braun's summary of day: the Poor Law is alive & kicking! #tpc11

13-Jun-11 20:18 | DrTeresaCairns



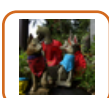
Dorit Braun: current discourse is @ dividing ppl between the deserving & undeserving poor #tpc11

13-Jun-11 20:19 | DrTeresaCairns



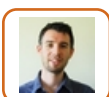
Dorit Braun: also suggestion that professionals who intervene can be either agents of the state or agents of change-challenging point #tpc11

13-Jun-11 20:20 | DrTeresaCairns



OK,tweeting over for the day - my typing fingers are tired, need to recuperate in preparation for tomorrow at #tpc11

13-Jun-11 20:30 | DrTeresaCairns



RT @commutiny: Thirtysomething #grandparents need social services to adapt, says study <http://t.co/AfTEoRe> via @guardian #tpc11 #olderlives in the news

13-Jun-11 21:20 | salfordgareth