

# #tpc11

## Timescapes Policy Conference 14 June

Twitter transcript  
Timescapes Policy Conference  
14 June

## Trending Words

#lifechances, rt, &, #families, mp,  
graham, allen, -, policy, frank, early,  
field, 2, families, #research

## Event Participants





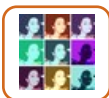
RT @TimescapesStudy: Paul Boyle CE @ESRC now speaking on #impact & contribution of #qualitative & #quantitative #longitudinal #research <http://ow.ly/5fNbW> #tpc11

14-Jun-11 05:20 | iseressex



Day 2 of our #families #policyconference starts soon. Morning sessions feature Graham Allen MP and Frank Field MP <http://ow.ly/5h9L0> #tpc11

14-Jun-11 09:08 | TimescapesStudy



RT @TimescapesStudy: Day 2 of our #families #policyconference starts soon. Morning sessions feature Graham Allen MP and Frank Field MP <http://ow.ly/5h9L0> #tpc11

14-Jun-11 09:08 | commutiny



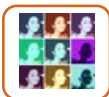
Professor Alan Deacon is the Chair of our morning session at #tpc11 <http://ow.ly/5go4r>

14-Jun-11 09:30 | TimescapesStudy



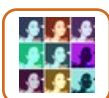
two MPs speaking this morning. one is frank field. this should be interesting #tpc11

14-Jun-11 09:33 | salfordgareth



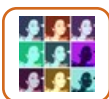
Focus today is the debate of how we can best support families over time and learn from practitioners #tpc11

14-Jun-11 09:37 | commutiny



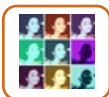
Dorit Braun warms up with key points fr/ yesterday, underlining value of qualitative longitudinal research for understanding families #tpc11

14-Jun-11 09:39 | commutiny



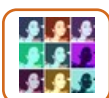
RT @DrTeresaCairns: Rapporteur-Dorit Braun: ppl's lives are complicated although policy makers wld like them to be simple #tpc11 #lifechances

14-Jun-11 09:42 | commutiny



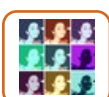
RT @DrTeresaCairns: Dorit Braun: lives are also gendered-not just @ g/parents, but we're not distinguishing between g/fathers/mothers or sons/daughters #tpc11

14-Jun-11 09:43 | commutiny



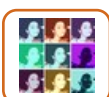
RT @DrTeresaCairns: Dorit Braun: also suggestion that professionals who intervene can be either agents of the state or agents of change-challenging point #tpc11

14-Jun-11 09:43 | commutiny



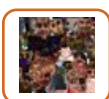
Research on personal resilience is part of how we help people deal with difficult life events (@gloryoffailure would agree) #tpc11

14-Jun-11 09:45 | commutiny



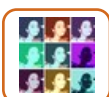
Qualitative research over time can tell us in more rich detail about intimacy, home, place and community - vital for policymakers #tpc11

14-Jun-11 09:46 | commutiny



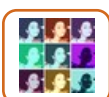
RT @DrTeresaCairns: Dorit Braun: also suggestion that professionals who intervene can be either agents of the state or agents of change-challenging point #tpc11

14-Jun-11 09:47 | 0\_h\_r\_1



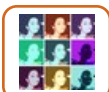
This research illuminates how people make sense of their lives over the life course, so policy can avoid the simplistic long view #tpc11

14-Jun-11 09:48 | commutiny



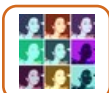
Skills and qualities of support workers, and their conditions of work influences "what works" - Is policy too intervention focused? #tpc11

14-Jun-11 09:49 | commutiny



Dorit Braun: Our task as researchers is to make sense of the complexity of lives lived \*with\* the people we are trying to understand #tpc11

14-Jun-11 09:59 | commutiny



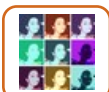
Now setting out the case for early years interventions is Graham Allen MP for Nottingham North <http://ow.ly/5hbzY> < read his blog #tpc11

14-Jun-11 10:00 | commutiny



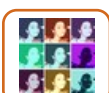
Now setting out the case for early years interventions is Graham Allen MP for Nottingham North <http://ow.ly/5hbzZ> < read his blog #tpc11

14-Jun-11 10:00 | TimescapesStudy



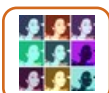
Graham Allen starts with an enormous compliment to the @timescapesstudy team "I should have talked with you all two years ago" #tpc11

14-Jun-11 10:02 | commutiny



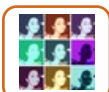
"Every child and young person should have the social & emotional bedrock to make the best of themselves" Graham Allen MP #lifechances #tpc11

14-Jun-11 10:04 | commutiny



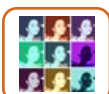
"Every child deserves the care, support & opportunities we would provide for our own without a second thought" Graham Allen MP #tpc11

14-Jun-11 10:07 | commutiny



Break the cycle so that no interventions are necessary "I want the new-born baby to be the great parent of the next generation" #tpc11

14-Jun-11 10:08 | commutiny



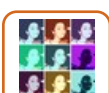
Invest more in early intervention, Graham Allen MP tells government <http://ow.ly/5goNs> HT @familylaw #tpc11

14-Jun-11 10:10 | commutiny



Early Intervention: The Next Steps - An Independent Report to Her Majesty's Government by Graham Allen MP [pdf] <http://ow.ly/5goy8> #tpc11

14-Jun-11 10:15 | TimescapesStudy



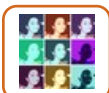
Graham Allen was inspired by responses to shootings in USA inc the Greater Littleton Youth Initiative among others <http://ow.ly/5hc31> #tpc11

14-Jun-11 10:17 | commutiny



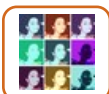
RT @commutiny: "Every child deserves the care, support & opportunities we would provide for our own without a second thought" Graham Allen MP #tpc11

14-Jun-11 10:19 | adopdad



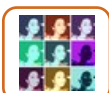
RT @bobble2009: Ben Lucas discusses early intervention with Graham Allen MP & CI: via Parents Against Injustice <http://ning.it/iNRxEG> #tpc11

14-Jun-11 10:20 | commutiny



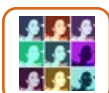
Graham Allen MP strongly recommends you watch this 3 minute video > #Brain Hero <http://ow.ly/5hc9G> #lifechances #families #tpc11

14-Jun-11 10:21 | commutiny



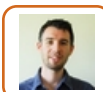
Also highly recommended "to make you laugh and cry" The Boy Who was Raised as a Dog and Other Stories <http://ow.ly/5hcgH> #tpc11

14-Jun-11 10:24 | commutiny



Early interventions to create decent start for people and families able to look after themselves is very good economics #tpc11

14-Jun-11 10:26 | commutiny



graham allen MP callin 4 more longitudinal & life course research. evidence needed 2 access funds that will help families #tpc11

14-Jun-11 10:41 | salfordgareth



RT @commutiny: Graham Allen MP strongly recommends you watch this short video > BrainHero <http://ow.ly/5hc9G> #lifechances #families #tpc11

14-Jun-11 10:43 | TimescapesStudy



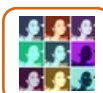
RT @salfordgareth: graham allen MP callin 4 more longitudinal & life course research. evidence needed 2 access funds that will help families #tpc11

14-Jun-11 10:43 | commutiny



Frank Field MP now speaking on preventing poor children from becoming poor adults <http://www.frankfield.co.uk/> #tpc11 #poorkids

14-Jun-11 10:46 | TimescapesStudy



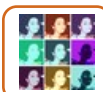
Frank Field MP: A longitudinal analysis by the Institute of Education showed our #lifechances are predictable from age 5 #tpc11

14-Jun-11 10:50 | commutiny



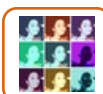
RT @commutiny: Frank Field MP: A longitudinal analysis by the Institute of Education showed our #lifechances are predictable from age 5 #tpc11

14-Jun-11 10:51 | hark\_the\_herald



Frank Field & Graham Allen are right to champion early intervention – but @Innovation\_Unit says we need to go <http://ow.ly/5hd5E> #tpc11

14-Jun-11 10:53 | commutiny



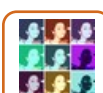
We should take seriously the request from young people to learn to be good parents, help them understand the importance of nurturing #tpc11

14-Jun-11 10:55 | commutiny



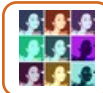
We need to support parents from the womb onwards - we get the best value and outcomes from \*early\* help to improve #lifechances #tpc11

14-Jun-11 10:57 | commutiny



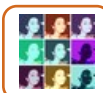
Frank Field MP chaired the independent Review on #Poverty & #LifeChances. Read the (Dec 2010) report here [pdf] <http://ow.ly/5gpgM> #tpc11

14-Jun-11 11:00 | commutiny



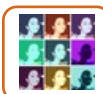
Recommendation: Make sure parents are in the driving seat & change interventions funding - early years workers to be paid by results #tpc11

14-Jun-11 11:02 | commutiny



At #tpc11 conference: Frank Field MP now referring to @JRF\_UK report on child #poverty in the UK <http://ow.ly/5hdrl> #lifechances #poorkids

14-Jun-11 11:04 | commutiny



See also: Towards universal early years provision: analysis of recent take-up by disadvantaged #families <http://ow.ly/5hdDd> #research #tpc11

14-Jun-11 11:11 | commutiny



Govt's 1st national child #poverty strategy: tackling the causes of disadvantage and transforming families' Lives <http://ow.ly/5hdJN> #tpc11

14-Jun-11 11:13 | commutiny



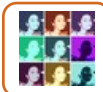
Frank Field MP - despite bein poorly parented many children keen 2 learn how 2 become good parents #tpc11

14-Jun-11 11:14 | salfordgareth



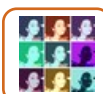
the needs of children are not the same as the rights of adults -Frank Field MP on welfare provision #tpc11

14-Jun-11 11:26 | salfordgareth



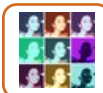
RT @Catch22Charity: Our report on Intergenerational Work & Community Safety was in last night's Evening Standard <http://bit.ly/k8GAJe> #tpc11

14-Jun-11 11:29 | commutiny



What #children think and feel about growing up poor <http://ow.ly/5hewQ> Great BBC article & video for followers of #tpc11 #poorkids

14-Jun-11 11:32 | commutiny



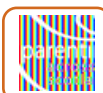
MT @GPlusinfo: Welfare reform – making it fairer for #family #carers by Kate Green MP <http://bit.ly/lcFVdF> #tpc11

14-Jun-11 11:45 | commutiny



I'm following @salfordgareth at #tpc11 and Frank Field is saying some good stuff.

14-Jun-11 11:47 | RickCrawf



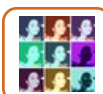
RT @TimescapesStudy: RT @commutiny: Graham Allen MP strongly recommends you watch this short video > BrainHero <http://ow.ly/5hc9G> #lifechances #families #tpc11

14-Jun-11 12:13 | ScotParents



Parallel sessions this afternoon: #lifechances chaired by Lisa Williams, Department of Health #tpc11

14-Jun-11 12:20 | TimescapesStudy



.@CRFRtweets Thomas Scarf recommends this #Impact Brochure by @age\_uk et al making the case for #ageing #research <http://t.co/cN5guy0> #tpc11

14-Jun-11 12:21 | commutiny



Our #families sessions this afternoon are chaired by Clem Henricson of the National Family Planning and Parenting Institute #tpc11

14-Jun-11 12:30 | TimescapesStudy



Puja Darbari from @Barnardos sharing "Below the headline" #research and support for children in #poverty #tpc11 #poorkids

14-Jun-11 12:35 | TimescapesStudy



#Olderlives sessions chair this afternoon at #tpc11 is Sam Smethers of <http://www.grandparentsplus.org.uk> @GPlusinfo

14-Jun-11 12:38 | TimescapesStudy



Rhian Beynon, Head of Policy and Campaigns @Family\_Action gives our first #families session at #tpc11 <http://ow.ly/5hhK1>

14-Jun-11 12:41 | TimescapesStudy



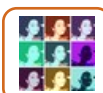
Gillian Crosby, Director of Centre for Policy on Ageing is talking about better outcomes for olde people <http://ow.ly/5hhUO> #tpc11

14-Jun-11 12:43 | TimescapesStudy



Puja Darbari describes lives & challenges of 16 UK families living in poverty. Read the research here <http://ow.ly/5gruf> #tpc11 #lifechances

14-Jun-11 12:45 | commutiny



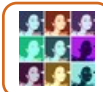
Gillian Crosby's recent presentation: Providing Services for Older People in Challenging Times. <http://ow.ly/5hisc> #tpc11 #olderlives

14-Jun-11 12:52 | commutiny



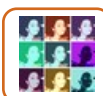
RT @TimescapesStudy: Puja Darbari from @Barnardos sharing "Below the headline" #research & support 4 children in #poverty #tpc11 #poorkids

14-Jun-11 13:05 | drivingequality



Being a good mum: Teens have their say <http://ow.ly/5gu5k> < News for Mother's Day from Carmen Lau Clayton's research #lifechances #tpc11

14-Jun-11 13:05 | commutiny



If you're enjoying the session from Zoe Munby and Elizabeth Young, checkout @homestartuk's publications <http://ow.ly/5hjNA> #tpc11

14-Jun-11 13:14 | commutiny



A little less livechat from @commutiny this afternoon as our practitioner presenters are sharing sensitive cases #tpc11 <http://ow.ly/5hk0e>

14-Jun-11 13:16 | TimescapesStudy



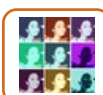
Stephen Burke @unitedforallages sharing approaches from perspective of #families of older people with high support needs #tpc11 #olderlives

14-Jun-11 13:20 | TimescapesStudy



RT @commutiny: At #tpc11 conference: Frank Field MP now referring to @JRF\_UK report on child #poverty in the UK <http://ow.ly/5hdrl> #lifechances #poorkids

14-Jun-11 13:20 | jrf\_uk



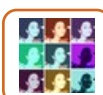
United or divided? Policy paper looking at different generations by Stephen Burke @Unitedforallages <http://ow.ly/5hkjH> #tpc11 #olderlives

14-Jun-11 13:24 | commutiny



Kate Billingham on Learning from the Family Nurse Partnership programme via @4ChildrenUK <http://ow.ly/5gv6Y> #tpc11 #lifechances

14-Jun-11 13:31 | TimescapesStudy



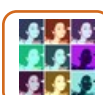
Want more from Kate Billingham? Check out her #health conversations blog <http://ow.ly/5guCd> #tpc11 #families #lifechances

14-Jun-11 13:35 | commutiny



Judy Nixon leads our final #families session today on principles, practice & impact for intensive support projects <http://ow.ly/5hlida> #tpc11

14-Jun-11 13:36 | TimescapesStudy



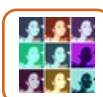
An evaluation of six pioneering anti-social behaviour intensive family support projects <http://ow.ly/5hline> (Judy Nixon et al, 2006) #tpc11

14-Jun-11 13:38 | commutiny



RT @TimescapesStudy: Kate Billingham on Learning from the Family Nurse Partnership programme via @4ChildrenUK <http://ow.ly/5gv6Y> #tpc11 #lifechances

14-Jun-11 13:43 | growingupinscot



Online guide & toolkits for Intergenerational Practice <http://ow.ly/5hISO> < 10th anniversary is an opportunity for impact #tpc11 #olderlives

14-Jun-11 13:45 | commutiny



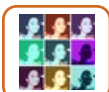
RT @commutiny: Online guide & toolkits for Intergenerational Practice <http://ow.ly/5hISO> < 10th anniversary is an opportunity for impact #tpc11 #olderlives

14-Jun-11 13:49 | mikechitty



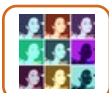
Short break before final plenary and reflections from Katherine Rake from @FPIonline #tpc11

14-Jun-11 14:12 | TimescapesStudy



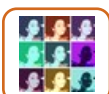
Katherine: Beveridge created a very clear settlement between families & State, since broken by changes to child benefit & tax regime #tpc11

14-Jun-11 14:43 | commutiny



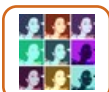
Katherine: Cameron aspires for Britain to become the most family friendly place in Europe... but vulnerable families have done worst #tpc11

14-Jun-11 14:46 | commutiny



Analysis of govt's economic cuts package identifies #families w/ new babies among those hardest hit <http://ow.ly/5hqXh> #tpc11 #lifechances

14-Jun-11 14:49 | commutiny



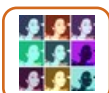
Katherine: Business perspective is missing from @TimescapesStudy research < Can anyone help fill this gap? #tpc11

14-Jun-11 14:52 | commutiny



Prof Bren Neale, Director of @TimescapesStudy - #qualitative #longitudinal #research projects supported by @ESRC <http://ow.ly/5hrLR> #tpc11

14-Jun-11 15:02 | TimescapesStudy



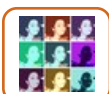
Tracking Young Lives over Time: Review of Longitudinal Evidence on Children in Europe by Bren Neale & Anna Bagnoli <http://ow.ly/5hsfR> #tpc11

14-Jun-11 15:07 | commutiny



RT @TimescapesStudy: #Olderlives sessions chair this afternoon at #tpc11 is Sam Smethers of <http://www.grandparentsplus.org.uk> @GPlusinfo

14-Jun-11 15:11 | GPlusinfo



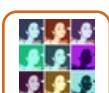
Neale: One new way to have influence and impact is to work with the grass roots and push the policy makers from the 'bottom' up #tpc11

14-Jun-11 15:15 | commutiny



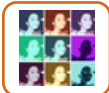
Our conference has now finished - look out for announcements of our new policy briefings launched today and available online soon #tpc11

14-Jun-11 15:19 | TimescapesStudy



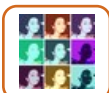
Of interest to #tpc11 > RT @iseressex: #podcast series at ISER aims to communicate complex social science #research simply

14-Jun-11 15:25 | commutiny



RT @TimescapesStudy: Our conference has now finished - look out for announcements of our new policy briefings launched today and available online soon #tpc11

14-Jun-11 15:28 | commutiny



Lucky me! #tpc11 finished in time for me to walk along the Thames from Westminster to the Tower for #ws11

14-Jun-11 15:44 | commutiny



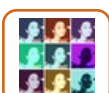
Thanks very much @ESRC @crftweets @growinupinscot @Barnados @salfordgareth @scotparents for following and retweeting our conference #tpc11

14-Jun-11 15:45 | TimescapesStudy



Great tweeting from @commutiny from our family policy conference today. Thanks Roxanne #tpc11

14-Jun-11 15:50 | TimescapesStudy



If you enjoyed #tpc11 you can watch a live stream from @FPIonline's #Family #Policy Conference 13 July <http://ow.ly/5hrkb>

14-Jun-11 16:35 | commutiny



G.Allen MP:looked @ Scandinavia/France/US models of 'what works' w/ families; discovered Del Eliot, UoColorado & his 12 blueprints #tpc11

14-Jun-11 17:53 | DrTeresaCairns



G. Allen MP: intergenerational change has to be sustained over time #tpc11 #lifechances #families

14-Jun-11 17:54 | DrTeresaCairns



G.Allen MP: enthusiastic @ developing 'sturdy brain architecture' thru early intervention #tpc11 #lifechances #families

14-Jun-11 17:55 | DrTeresaCairns



G.Allen, MP: report, 'Early Intervention: the Next Steps' pub. Jan 2011 -imp doc in policy & practice debate #tpc11 #lifechances #families

14-Jun-11 17:57 | DrTeresaCairns



G.Allen, MP:early intervention is cheaper/more effective than late intervention when it is crisis management #tpc11 #lifechances #families

14-Jun-11 17:58 | DrTeresaCairns



Frank Field MP: Lab govt aim re: poor children laudable but only achieved modest results #tpc11 #lifechances #families

14-Jun-11 17:59 | DrTeresaCairns



Frank Field, MP: recent report for coalition govt- need to develop indicators of life chances #tpc11 #lifechances #families

14-Jun-11 18:00 | DrTeresaCairns



F.Field, MP: probably @3, certainly @5, you could predict a child's life outcomes #tpc11 #lifechances #families

14-Jun-11 18:01 | DrTeresaCairns



F.Field, MP: parents need their competence boosted #tpc11 #lifechances #families

14-Jun-11 18:02 | DrTeresaCairns



F.Field, MP: tFoundation yrs-SureStart shld remain a universal service, but interventions need ot target those who need it most #tpc11

14-Jun-11 18:04 | DrTeresaCairns



F.Field: Foundation Yrs-services shld be paid by results to ensure focus on delivery #tpc11 #lifechances #families

14-Jun-11 18:05 | DrTeresaCairns



F.Field stated re:work & jobs, that '80% of jobs created during Lab govt' went to immigrants-no-one challenged this pt! #tpc11 #lifechances

14-Jun-11 18:07 | DrTeresaCairns



discussion: not gd that current discourse in public opinion showed lack of compassion in attitude towards poor families #tpc11 #families

14-Jun-11 18:09 | DrTeresaCairns



G.Allen, in discussion: LP focused on physical/infrastructure regeneration at expense of social/emotional capabilities #tpc11 #lifechances

14-Jun-11 18:11 | DrTeresaCairns



G.Allen:argued for measuring outcomes in order to 'monetise it' -not challenged @ this; implications need interrogating #tpc11 #lifechances

14-Jun-11 18:13 | DrTeresaCairns





Timescapes v.interesting, enjoyed challenge of tweeting highlights -does concentrate the mind! #tpc11

14-Jun-11 18:52 | DrTeresaCairns



RT @salfordgareth: "research illuminates policy" - 1 of the most encouraging statements i heard 2day #tpc11

14-Jun-11 18:53 | shusuphil



sheds light on policy outcomes? RT @salfordgareth: "research illuminates policy" - 1 of the most encouraging statements i heard 2day #tpc11

14-Jun-11 19:31 | DrTeresaCairns



RT @commutiny Paul Boyle encourages all researchers to consider impact right from the start - @ESRC Impact Toolkit <http://ow.ly/5gfCm> #tpc11

14-Jun-11 20:57 | WeAreThink